

zotero

the next-generation research tool



The
Andrew W.
Mellon
Foundation



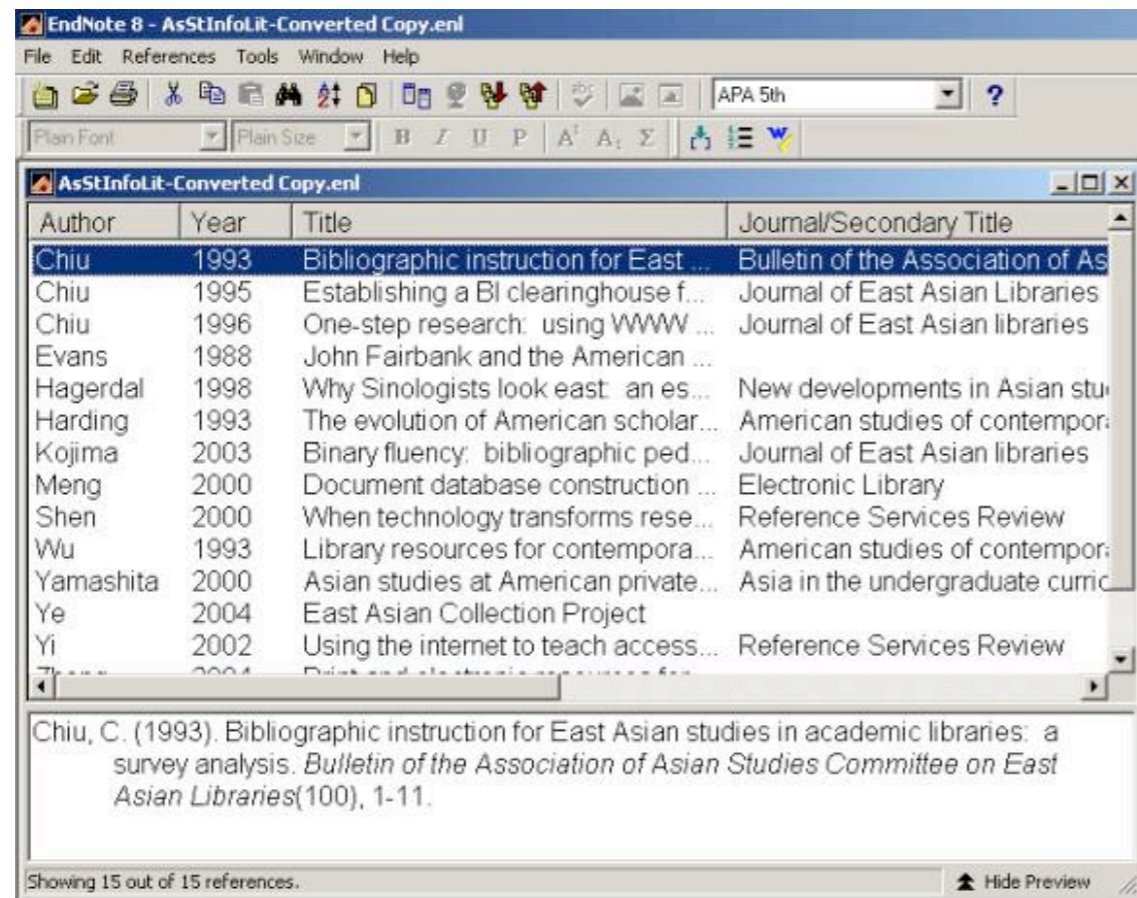
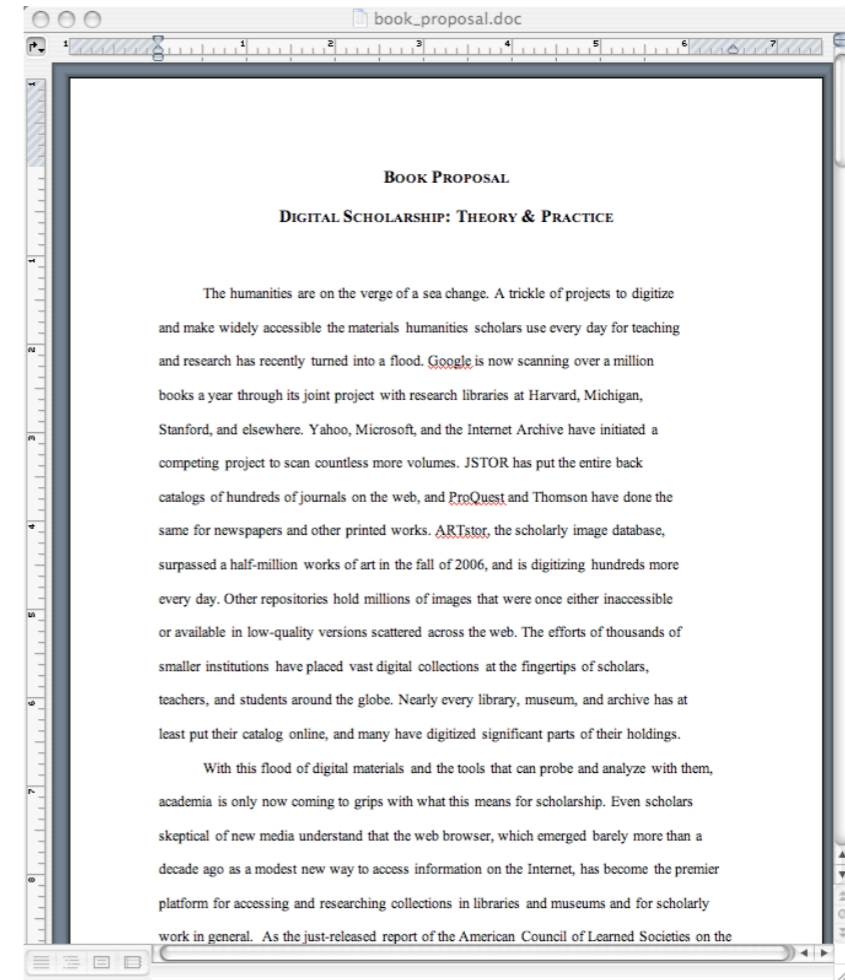
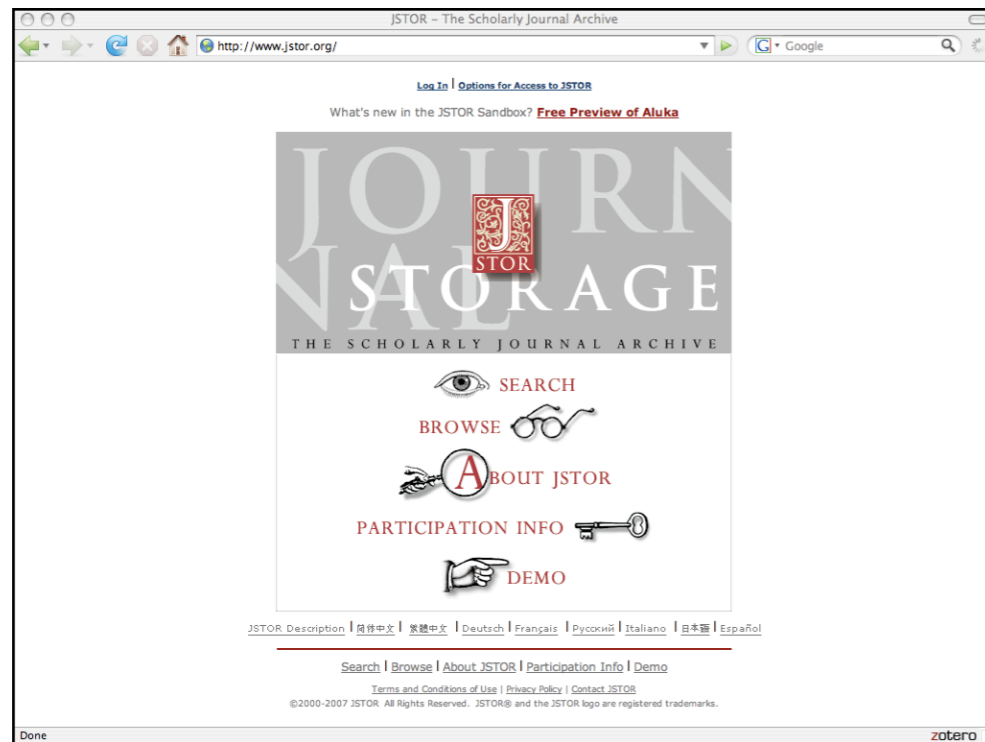
www.zotero.org



Dan Cohen

dcohen@gmu.edu

www.dancohen.org



Hilton Smith, pitcher
 K.C. Monarchs B.B. Colub
 & pitch a no hitter in 1937
 no walk no run no hit
 & pitch in 6 all star game
 & won 2 seasons won 2
 game in each one.

zotero ^{beta}

A personal research assistant. Inside your browser.

[Home](#)
[Documentation](#)
[Forums](#)
[For Developers](#)
[Blog](#)
[About](#)

Zotero [zoh-TAIR-oh] is a free, easy-to-use **Firefox extension** to help you **collect, manage, and cite** your research sources. It lives right where you do your work — in the **web browser** itself.



Having trouble installing?

REQUIREMENTS

Firefox 2.0

Zotero is not compatible with earlier versions of Firefox.

Windows, Mac, or Linux

Please note: Zotero is currently beta software and is constantly being improved. Please see the [Known Issues and Planned Features](#) page if you are having problems or would like to know what's coming soon.

zotero

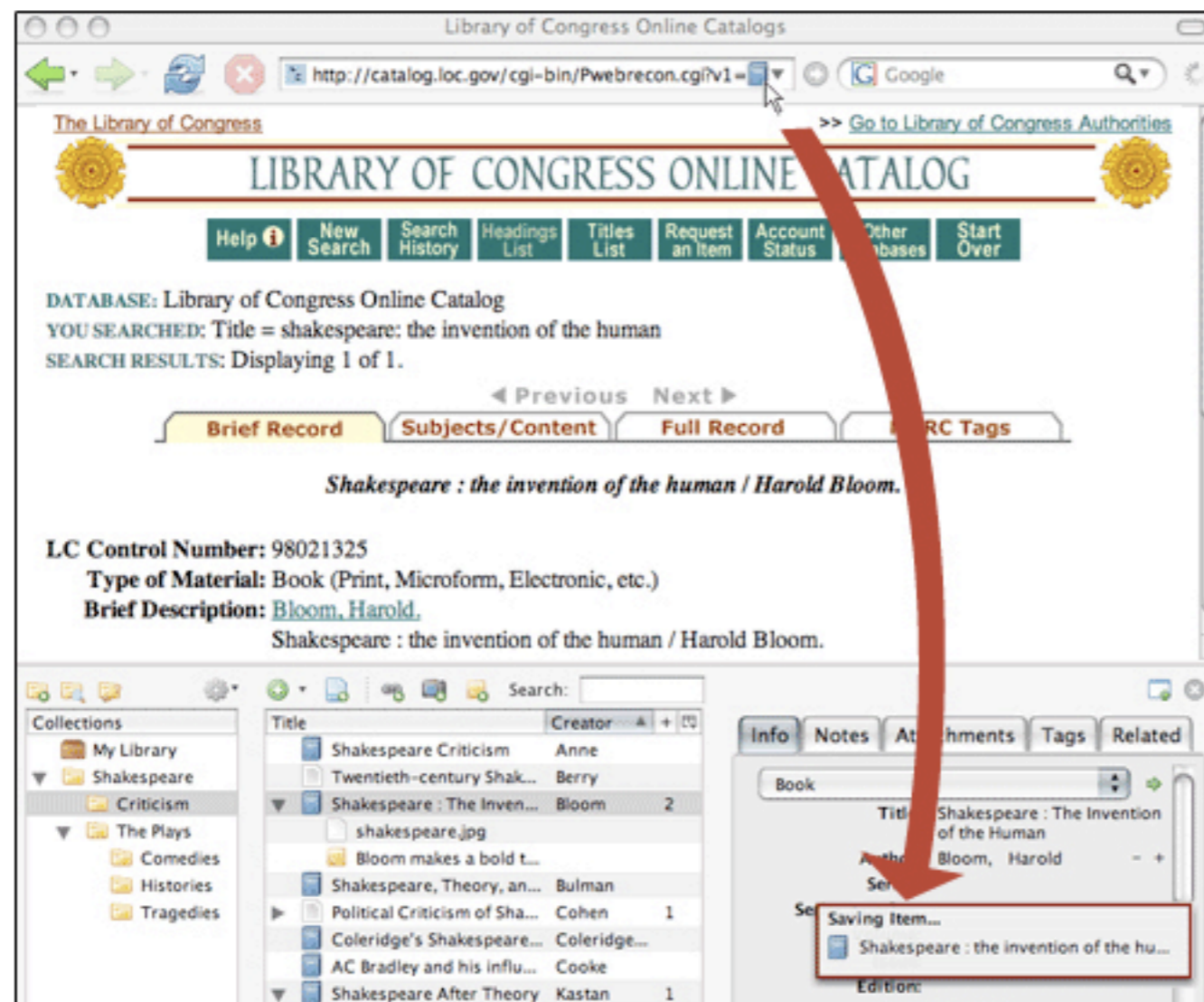
a powerful, free online/offline research tool
for the Firefox 2.0 Web browser

view demo 

FROM THE BLOG

[The British \(and Irish\) Are Coming March 15th, 2007](#)

[What Other Citation Formats Would You](#)



Library of Congress Online Catalogs

http://catalog.loc.gov/cgi-bin/Pwebrecon.cgi?v1=

The Library of Congress

LIBRARY OF CONGRESS ONLINE CATALOG

Help | New Search | Search History | Headings List | Titles List | Request an Item | Account Status | Other Bases | Start Over

DATABASE: Library of Congress Online Catalog
YOU SEARCHED: Title = shakespeare: the invention of the human
SEARCH RESULTS: Displaying 1 of 1.

◀ Previous Next ▶

Brief Record | Subjects/Content | Full Record | RC Tags

Shakespeare : the invention of the human / Harold Bloom.

LC Control Number: 98021325
Type of Material: Book (Print, Microform, Electronic, etc.)
Brief Description: [Bloom, Harold.](#)
Shakespeare : the invention of the human / Harold Bloom.

Title	Creator	
Shakespeare Criticism	Anne	
Twentieth-century Shak...	Berry	
Shakespeare : The Inven...	Bloom	2
shakespeare.jpg		
Bloom makes a bold t...		
Shakespeare, Theory, an...	Bulman	
Political Criticism of Sha...	Cohen	1
Coleridge's Shakespeare...	Coleridge...	
AC Bradley and his influ...	Cooke	
Shakespeare After Theory	Kastan	1

Info | Notes | Attachments | Tags | Related

Book

Title: Shakespeare : The Invention of the Human
Author: Bloom, Harold

Saving Item...
Shakespeare : the invention of the hu...

[Log In](#) | [Options for Access to JSTOR](#)

What's new in the JSTOR Sandbox? [Free Preview of Aluka](#)



 [SEARCH](#)

[BROWSE](#) 

 [ABOUT JSTOR](#)

[PARTICIPATION INFO](#) 

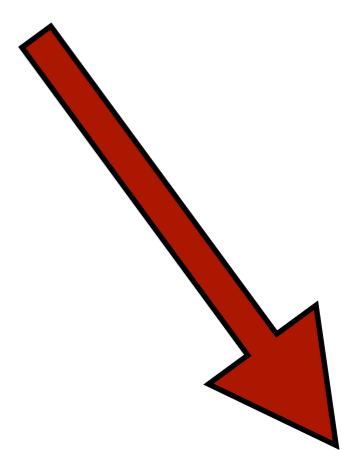
 [DEMO](#)

[JSTOR Description](#) | [简体中文](#) | [繁體中文](#) | [Deutsch](#) | [Français](#) | [Русский](#) | [Italiano](#) | [日本語](#) | [Español](#)

[Search](#) | [Browse](#) | [About JSTOR](#) | [Participation Info](#) | [Demo](#)

[Terms and Conditions of Use](#) | [Privacy Policy](#) | [Contact JSTOR](#)

©2000-2007 JSTOR. All Rights Reserved. JSTOR® and the JSTOR logo are registered trademarks.



[Log In](#) | [Options for Access to JSTOR](#)

What's new in the JSTOR Sandbox? [Free Preview of Aluka](#)



 **SEARCH**

BROWSE 

 **ABOUT JSTOR**

Search:

Collections

- My Library
- Shakespeare
 - Criticism
 - The Plays
 - Comedies
 - Histories
 - Tragedies

Title	Creator	
AC Bradley and his influence in twentie...	Cooke	
Coleridge's Shakespeare Criticism	Coleridge et al.	
▶ Political Criticism of Shakespeare	Cohen	1
▶ Shakespeare : The Invention of the Hu...	Bloom	1
Shakespeare After Theory	Kastan	
Shakespeare Criticism	Anne	
Shakespeare Criticism 1919-1935	Ridler	
Shakespeare, Theory, andPerformance	Bulman	
Twentieth-century Shakespeare criticis...	Berry	

Info Notes Attachments Tags Related

View

Journal Article

Title: Twentieth-century Shakespeare criticism: the histories

Author: Berry, E

Abstract:

Publication: An Cambridge Companion to Shakespeare Studies



Search:

Collections

- My Library
- Shakespeare
 - Criticism
 - The Plays
 - Comedies
 - Histories
 - Tragedies
 - Hamlet Sources

Title	Creator	
A Midsummer Night's Dream	Shakespeare et al.	
AC Bradley and his influence in twentie...	Cooke	1
AC Bradley's 1904 lectures on Shak...		
All's Well that Ends Well	Shakespeare	
Ambivalence in the Player's Speech in ...	Westlund	4
An Analysis and study of the leading c...	Oxon et al.	1
Antony and Cleopatra	Shakespeare	
As You Like it	Shakespeare	
Claudius's 'Effects' in Hamlet	Edelman	1
Cognition and Recognition: Hamlet's P...	Yang	1
Coleridge's Shakespeare Criticism	Coleridge et al.	
Complete Works	Shakespeare	
Coriolanus	Shakespeare et al.	
Delacroix's "Hamlet" Studies	Edenbaum	1
Ducis's Hamlet	Pope	1
Ein Schatz wird geboren. Sensationeller...	André	1
Hamlet	Shakespeare et al.	
Hamlet and Freud	Stearns	1
Hamlet's Bodies	Rauen	1
Hamlet's Doubles	Berry	1
Hamlet's Grief	Kirsch	1
Hamlet's Hallucination	Greg	1
Hamlet's Hand	Goldberg	1
Hamlet's Letters	Nathan	1
Hamlet's Mother	Maxwell	1
Hamlet's Polonius, and Shakspeare's	Gierasch	1
Hamlet's Progress of Dust: A Parody of...	Doloff	1
Hamlet's Quest of Certainty	McCloskey	1
Hamlet's Quietus	Soule	1
Hamlet's Readiness	Calderwood	1
Hamlet, Antonio's Revenge and the Ur-...	Smith et al.	2
Having It Both Ways: Reading Two Early...	Clary	1
John Marston, The Malcontent, and the ...	Cathcart	1
Julius Caesar	Shakespeare et al.	
King Henry the Sixth	Shakespeare	

AC Bradley and his influence in twentieth-century Shakespeare criticism

AC Bradley's 1904 lectures on Shakespearean tragedy are deservedly regarded as classics of criticism. His analysis of Hamlet is deservedly famous, particularly his discussion of the famed problem of Hamlet's delay.

He classifies theories of the delay into several large categories. First are those that suggest that Hamlet delays mainly or primarily because of external circumstances – the risks of moving ahead with only the ghost's word for it, the need to bring the King to public justice and therefore the need to expose the king's guilt before the entire court, and so on. Bradley says that the theory is plausible until one reads the play. Contrary to this theory, Hamlet never describes any external obstacles to the execution of the ghost's instructions, assumes he has the means and the right to carry out those instructions, he never speaks of intending to bring Claudius to public justice.

A second sort of theory attributes Hamlet's delay to moral scruples. Bradley admits that Hamlet attributes the delay in part to conscience (5.2.63ff) but that this is neither nor the main reason cited for the delay. Further, Hamlet appears in the main to consider killing Claudius a moral duty. One might shift the ground a bit to suggest that Hamlet is unconsciously ambivalent about this duty: "in the depths of his nature, and unknown to himself, there was a moral repulsion to the deed." Bradley considers this a stronger position, but cannot accept it for a variety of reasons, among them the assumption that the ghost's instructions are not to be obeyed. He thinks it "clear that, whatever we in the twentieth century may think about Hamlet's duty, we are meant in the play to assume that he ought to have obeyed the Ghost."

Related: [\[click here\]](#)Tags: [\[click here\]](#)

SEL, 18 (1978)
ISSN 0039-3657

Ambivalence in The Player's Speech in *Hamlet*

J O S E P H W E S T L U N D

The Player's speech and Hamlet's response to it convey an extraordinary sense of the difficulties involved in moving from thought to deed. Critics tend to restrict the effect of the episode. Harry Levin finds that "the 'damn'd defeat' of Priam, reminding Hamlet of his father, prompts him to renounce his hitherto passive role, to soliloquize on the Player's example, and finally to evolve his plan of action."¹ Arthur Johnston, however, argues that "sympathy lies with the victim, not the

JSTOR[Articles by J. Westlund](#)**Google Scholar**[Articles Citing this Article](#)[Related Articles](#)[Articles by J. Westlund](#)

Search:

Title	Creator	
Ambivalence in the Player's Speech in ...	Westlund	1
JSTOR Link		
Claudius's 'Effects' in Hamlet	Edelman	1
Cognition and Recognition: Hamlet's P...	Yang	1
Coleridge's Shakespeare Criticism	Coleridge et al.	
Delacroix's "Hamlet" Studies	Edenbaum	1
Ducis's Hamlet	Pope	1
Ein Schatz wird geboren. Sensationeller...	André	1
Hamlet and Freud	Stearns	1

Info Notes Attachments Tags Related

View Locate

Journal Article

Title: Ambivalence in the Player's Speech in Hamlet

Author: Westlund, Joseph

Abstract:

Publication: Studies in English Literature, 1500-1900

zotero works with...



most library catalogs



ProQuest



ISI Web of KnowledgeSM



The
Washington
Post



The New York Times



**The New York Review
of Books**

and hundreds of other sites and databases...

SEL, 18 (1978)
ISSN 0039-3657

Ambivalence in The Player's Speech in *Hamlet*

J O S E P H W E S T L U N D

The Player's speech and Hamlet's response to it convey an extraordinary sense of the difficulties involved in moving from thought to deed. Critics tend to restrict the effect of the episode. Harry Levin finds that "the 'damn'd defeat' of Priam, reminding Hamlet of his father, prompts him to renounce his hitherto passive role, to soliloquize on the Player's example, and finally to evolve his plan of action."¹ Arthur Johnston, however, argues that "sympathy lies with the victim, not the

JSTOR

[Articles by J. Westlund](#)

Google Scholar

[Articles Citing this Article](#)

[Related Articles](#)

[Articles by J. Westlund](#)

Search:

Title	Creator	
Ambivalence in the Player's Speech in ...	Westlund	4
Claudius's 'Effects' in Hamlet	Edelman	1
Cognition and Recognition: Hamlet's P...	Yang	1
Coleridge's Shakespeare Criticism	Coleridge et al.	
Delacroix's "Hamlet" Studies	Edenbaum	1
Ducis's Hamlet	Pope	1
Ein Schatz wird geboren. Sensationeller...	André	1
Hamlet and Freud	Stearns	1
Hamlet's Hallucination	Greg	1

Done

Info Notes Attachments Tags Related

2 notes:

- This is the first article that discusses the theme ...
- Westlund may be right about the Player, but he s...

zotero

JSTOR[Articles by J. Westlund](#)**Google Scholar**[Articles Citing this Article](#)[Related Articles](#)[Articles by J. Westlund](#)

SEL, 18 (1978)

ISSN 0039-3657

Ambivalence in The Player's Speech in *Hamlet*

J O S E P H W E S T L U N D

The Player's speech and Hamlet's response to it convey an extraordinary sense of the difficulties involved in moving from thought to deed. Critics tend to restrict the effect of the episode. Harry Levin finds that "the 'damn'd defeat' of Priam, reminding Hamlet of his father, prompts him to renounce his hitherto passive role, to soliloquize on the Player's example, and finally to evolve his plan of action."¹ Arthur Johnston, however, argues that "sympathy lies with the victim, not the

Search:

Title	Creator	
Ambivalence in the Player's Speech in ...	Westlund	4
Claudius's 'Effects' in Hamlet	Edelman	1
Cognition and Recognition: Hamlet's P...	Yang	1
Coleridge's Shakespeare Criticism	Coleridge et al.	
Delacroix's "Hamlet" Studies	Edenbaum	1
Ducis's Hamlet	Pope	1
Ein Schatz wird geboren. Sensationeller...	André	1
Hamlet and Freud	Stearns	1
Hamlet's Hallucination	Greg	1

Info Notes Attachments Tags Related

2 attachments:

JSTOR Link -

Hamlet's Soliloquies.doc -

SEL, 18 (1978)
ISSN 0039-3657

Ambivalence in The Player's Speech in *Hamlet*

J O S E P H W E S T L U N D

The Player's speech and Hamlet's response to it convey an extraordinary sense of the difficulties involved in moving from thought to deed. Critics tend to restrict the effect of the episode. Harry Levin finds that "the 'damn'd defeat' of Priam, reminding Hamlet of his father, prompts him to renounce his hitherto passive role, to soliloquize on the Player's example, and finally to evolve his plan of action."¹ Arthur Johnston, however, argues that "sympathy lies with the victim, not the

JSTOR

[Articles by J. Westlund](#)

Google Scholar

[Articles Citing this Article](#)

[Related Articles](#)

[Articles by J. Westlund](#)

Search:

Title	Creator	Count
Ambivalence in the Player's Speech in ...	Westlund	4
Claudius's 'Effects' in Hamlet	Edelman	1
Cognition and Recognition: Hamlet's P...	Yang	1
Coleridge's Shakespeare Criticism	Coleridge et al.	
Delacroix's "Hamlet" Studies	Edenbaum	1
Ducis's Hamlet	Pope	1
Ein Schatz wird geboren. Sensationeller...	André	1
Hamlet and Freud	Stearns	1
Hamlet's Hallucination	Greg	1

Info Notes Attachments Tags Related

6 tags:

- Characters
- Freud
- Hamlet
- Psychology
- Shakespeare, William
- Soliloquies

SEL, 18 (1978)

ISSN 0039-3657

Ambivalence in The Player's Speech in *Hamlet*

J O S E P H W E S T L U N D

The Player's speech and Hamlet's response to it convey an extraordinary sense of the difficulties involved in moving from thought to deed. Critics tend to restrict the effect of the episode. Harry Levin finds that "the 'damn'd defeat' of Priam, reminding Hamlet of his father, prompts him to renounce his hitherto passive role, to soliloquize on the Player's example, and finally to evolve his plan of action."¹ Arthur Johnston, however, argues that "sympathy lies with the victim, not the

JSTOR

[Articles by J. Westlund](#)

Google Scholar

[Articles Citing this Article](#)

[Related Articles](#)

[Articles by J. Westlund](#)

Search:

Title	Creator	
Ambivalence in the Player's Speech in ...	Westlund	4
Claudius's 'Effects' in Hamlet	Edelman	1
Cognition and Recognition: Hamlet's P...	Yang	1
Coleridge's Shakespeare Criticism	Coleridge et al.	
Delacroix's "Hamlet" Studies	Edenbaum	1
Ducis's Hamlet	Pope	1
Ein Schatz wird geboren. Sensationeller...	André	1
Hamlet and Freud	Stearns	1
Hamlet's Hallucination	Greg	1

Info Notes Attachments Tags Related

3 related:

- An Analysis and study of the leading characters ...
- Cognition and Recognition: Hamlet's Power of Kn...
- Ein Schatz wird geboren. Sensationeller Fund: Ein...

Visualizing Hamlet's Ghost: The Spirit of Modern Subjectivity

[Alan L. Ackerman Jr.](#)

Plays have always represented a reality that is invisible, whether psychological, biological, metaphysical, or theological. A key problem for the drama since Shakespeare has been to represent or express human interiority on the stage. Understanding what is meant by interiority, however, is also, more generally, a historical problem. The premise of this essay is that a widespread re-imagining of the subject in the early decades of the nineteenth century is fundamental to what we think of today as the "modern" drama. This period, often characterized as Romantic, sees a re-investment in notions of the spirit and quasi-theological ways of thinking, a new way of imagining the relation of subject to object and the location of truth. In the preface to his *Phenomenology of Mind* [*Phänomenologie des Geistes*] (1806), Hegel claims that "our age is a birth-time, and a period of transition. The spirit of man has broken with the old order of things . . . In like manner the spirit of the time, growing quietly ripe for the new form it is to assume, disintegrates one fragment after another of the structure of its previous world." ¹ This transition is fundamentally related to changes in the concept of [End Page 119] vision. In this context, *Hamlet*, with emphasis placed upon the figure of the ghost and on Hamlet's imagination, becomes a central Romantic text. This essay traces a genealogy that begins, therefore, not simply with *Hamlet* but with Romantic interpretations of *Hamlet* and evolves in a debate in which dramatic structures and terms, images and even characters, taken from *Hamlet* are represented in turn by artists such as Goethe, Ibsen, and Wilde.

cf. Charles Taylor on Hegel's phenomenology, esp. his break from Kant.

Hugh Honour disagrees with this centrality of ghosts and spirits in the Romantic movement.

Search:

Collections

- My Library
- Shakespeare
 - Criticism
 - The Plays
 - Comedies
 - Histories
 - Tragedies
 - Hamlet Sources

Title	Creator	
Teaching Hamlet	Ornstein	1
'Tenderly' and 'With Care': Thomas Hoo...	Rivers	1
The Ghost in the Machine: Heine Müller...	Williams	1
The Tragedians of the City? Q1 Hamlet ...	Menzer	1
Twentieth-century Shakespeare criticis...	Berry	
Understanding "Hamlet"	Kemp	1
Visualizing Hamlet's Ghost: The Spirit o...	Ackerman	1
Project MUSE Snapshot		

Project MUSE Snapshot

View Snapshot

Show File

[http://muse.jhu.edu/journals/theatre_journal/v053/...](http://muse.jhu.edu/journals/theatre_journal/v053/)

Accessed: Tue Mar 27 13:36:43 2007

Related: [\[click here\]](#)

Tags: [\[click here\]](#)

AC Bradley and his influence in twentieth-century Shakespeare criticism

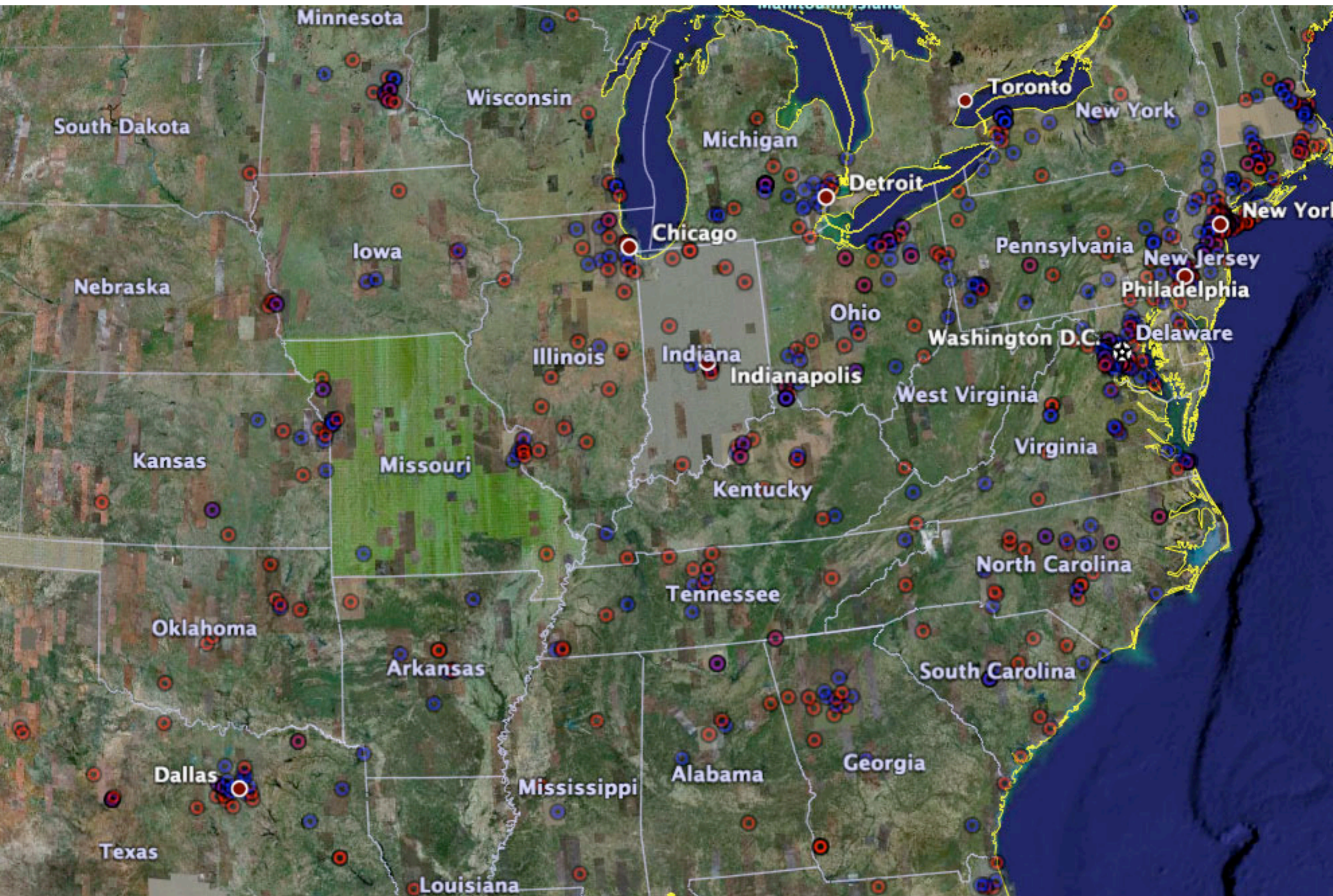
Type	Book
Author	Katherine Cooke
Publisher	Clarendon Press
Date	1972
Date Added	Tue Mar 27 19:50:40 2007
Modified	Tue Mar 27 19:50:40 2007

Notes

AC Bradley's 1904 lectures on Shakespearean tragedy are deservedly regarded as classics of criticism. His analysis of Hamlet is deservedly famous, particularly his discussion of the famed problem of Hamlet's delay.

He classifies theories of the delay into several large categories. First are those that suggest that Hamlet delays mainly or primarily because of external circumstances - the risks of moving ahead with only the ghost's word for it, the need to bring the King to public justice and therefore the need to expose the king's guilt before the entire court, and so on. Bradley says that the theory is plausible until one reads the play. Contrary to this theory, Hamlet never describes any external obstacles to the execution of the ghost's instructions, assumes he has the means and the right to carry out those instructions, he never speaks of intending to bring Claudius to public justice.

A second sort of theory attributes Hamlet's delay to moral scruples. Bradley admits that Hamlet attributes the delay in part to conscience (5.2.63ff) but that this is neither nor the main reason cited for the delay. Further, Hamlet appears in the main to consider killing Claudius a moral duty. One might shift the ground a bit to suggest that Hamlet is unconsciously ambivalent about this duty: "in the depths of his nature, and unknown to himself, there was a moral repulsion to the deed." Bradley considers this a stronger position, but cannot accept it for a variety of reasons, among them the assumption that the ghost's instructions are



Info Notes Attachments Tags Related

View Snapshot →

Locate →

Journal Article

Title: The Preface to Book V of Gregory of Tours' Histories: Its Form, Context and Significance

Author: Halsall, Guy - +

(...) Abstract: The preface to Book V of Gregory of Tours' Histories has long been known as ...

Publication: English Historical Review

Volume: CXXII

Issue: 496

Pages: 297-317

Date: April 1, 2007 ymd

Series:

Series Title:

Series Text:

Journal Abbr:

Language:

DOI: 10.1093/ehr/cem001

ISSN:

Short Title: The Preface to Book V of Gregory of Tours' Histories

URL: <http://ehr.oxfordjournals.org/cgi/content/abstract/CXXII/496/297>

Accessed: Wed Jun 6 14:50:11 2007

Call Number:

Loc. in Archive:

Repository: HighWire

Rights:

Extra:

Date Added: Wed Jun 6 14:50:11 2007

Modified: Wed Jun 6 14:50:11 2007

Info Notes Attachments Tags Related

View Snapshot →

Locate →

Journal Article

Title: The Preface to Book V of Gregory of Tours' Histories: Its Form, Context and Significance
Author: Halsall, Guy
(...) Abstract: The preface to Book V of Gregory of Tours' Histories has long been known as ...
Publication: English Historical Review
Volume: CXXII
Issue: 496
Pages: 297-317
Date: April 1, 2007 ymd
Series:
Series Title:
Series Text:
Journal Abbr:
Language:
DOI: 10.1093/ehr/cem001
ISSN:
Short Title: The Preface to Book V of Gregory of Tours' Histories
URL: <http://ehr.oxfordjournals.org/cgi/content/abstract/CXXII/496/297>
Accessed: Wed Jun 6 14:50:11 2007
Call Number:
Loc. in Archive:
Repository: HighWire
Rights:
Extra:
Date Added: Wed Jun 6 14:50:11 2007
Modified: Wed Jun 6 14:50:11 2007

AC Bradley's 1904 lectures on Shakespearean tragedy are deservedly regarded as classics of criticism. His analysis of Hamlet is deservedly famous, particularly his discussion of the famed problem of Hamlet's delay.

He classifies theories of the delay into several large categories. First are those that suggest that Hamlet delays mainly because of the circumstances - the risks of moving ahead without the need to bring the King to public justice and the need to bring Claudius to public justice. {Citation

A second sort of theory attributes the delay to Hamlet's internal conflict. He is neither the main reason cited for the delay. Further, Hamlet appears in the main to consider killing Claudius a moral duty. One might shift the ground a bit to suggest that Hamlet is unconsciously ambivalent about this duty: "in the depths of

Add Citation

Search:

Collections	Title	Creator
My Library	A Midsummer Nig...	Shakesp...
Shakespeare	AC Bradley and hi...	Cooke
Hamlet Sources	All's Well that End...	Shakesp...
	Ambivalence in th...	Westlund
	An Analysis and s...	Oxon et ...
	Antony and Cleop...	Shakesp...
	As You Like it	Shakesp...
	Claudius's 'Effects...	Edelman
	Cognition and Rec...	Yang
	Coleridge's Shake...	Coleridg...
	Complete Works	Shakesp...
	Coriolanus	Shakesp...
	Delacroix's "Haml...	Edenbau...
	Ducis's Hamlet	Pope
	Ein Schatz wird ge...	André
	Hamlet	Shakesp...
	Hamlet and Freud	Stearns

Page: 52

Single Source...

Cancel OK

AC Bradley and his influence in twen...
 An Analysis and study of the leadin...
 Complete Works

zotero server

zotero server



shared collections, notes,
and public domain documents

zotero server



shared collections, notes,
and public domain documents



scholarly groups in macro- and micro-
disciplines, official groups

zotero server



shared collections, notes,
and public domain documents



scholarly groups in macro- and micro-
disciplines, official groups



recommendations

zotero server



shared collections, notes,
and public domain documents



scholarly groups in macro- and micro-
disciplines, official groups



recommendations



bibliographic feeds

zotero server



shared collections, notes,
and public domain documents



scholarly groups in macro- and micro-
disciplines, official groups



recommendations



bibliographic feeds



APIs

1 43,743 Zoteros

(unique IPs of users, May 2007)

Info Notes Attachments Tags Related

View Snapshot →

Locate →

Journal Article

Title: The Preface to Book V of Gregory of Tours' Histories: Its Form, Context and Significance

Author: Halsall, Guy - +

(...) Abstract: The preface to Book V of Gregory of Tours' Histories has long been known as ...

Publication: English Historical Review

Volume: CXXII

Issue: 496

Pages: 297-317

Date: April 1, 2007 ymd

Series:

Series Title:

Series Text:

Journal Abbr:

Language:

DOI: 10.1093/ehr/cem001

ISSN:

Short Title: The Preface to Book V of Gregory of Tours' Histories

URL: <http://ehr.oxfordjournals.org/cgi/content/abstract/CXXII/496/297>

Accessed: Wed Jun 6 14:50:11 2007

Call Number:

Loc. in Archive:

Repository: HighWire

Rights:

Extra:

Date Added: Wed Jun 6 14:50:11 2007

Modified: Wed Jun 6 14:50:11 2007

Visualizing Hamlet's Ghost: The Spirit of Modern Subjectivity

[Alan L. Ackerman Jr.](#)

Plays have always represented a reality that is invisible, whether psychological, biological, metaphysical, or theological. A key problem for the drama since Shakespeare has been to represent or express human interiority on the stage. Understanding what is meant by interiority, however, is also, more generally, a historical problem. The premise of this essay is that a widespread re-imagining of the subject in the early decades of the nineteenth century is fundamental to what we think of today as the "modern" drama. This period, often characterized as Romantic, sees a re-investment in notions of the spirit and quasi-theological ways of thinking, a new way of imagining the relation of subject to object and the location of truth. In the preface to his *Phenomenology of Mind* [*Phänomenologie des Geistes*] (1806), Hegel claims that "our age is a birth-time, and a period of transition. The spirit of man has broken with the old order of things . . . In like manner the spirit of the time, growing quietly ripe for the new form it is to assume, disintegrates one fragment after another of the structure of its previous world." ¹ This transition is fundamentally related to changes in the concept of [End Page 119] vision. In this context, *Hamlet*, with emphasis placed upon the figure of the ghost and on Hamlet's imagination, becomes a central Romantic text. This essay traces a genealogy that begins, therefore, not simply with *Hamlet* but with Romantic interpretations of *Hamlet* and evolves in a debate in which dramatic structures and terms, images and even characters, taken from *Hamlet* are represented in turn by artists such as Goethe, Ibsen, and Wilde.

cf. Charles Taylor on Hegel's phenomenology, esp. his break from Kant.

Hugh Honour disagrees with this centrality of ghosts and spirits in the Romantic movement.

Search:

Collections

- My Library
- Shakespeare
 - Criticism
 - The Plays
 - Comedies
 - Histories
 - Tragedies
 - Hamlet Sources

Title	Creator	
Teaching Hamlet	Ornstein	1
'Tenderly' and 'With Care': Thomas Hoo...	Rivers	1
The Ghost in the Machine: Heine Müller...	Williams	1
The Tragedians of the City? Q1 Hamlet ...	Menzer	1
Twentieth-century Shakespeare criticis...	Berry	
Understanding "Hamlet"	Kemp	1
Visualizing Hamlet's Ghost: The Spirit o...	Ackerman	1
Project MUSE Snapshot		

Project MUSE Snapshot

[View Snapshot](#)

[Show File](#)

[http://muse.jhu.edu/journals/theatre_journal/v053/...](http://muse.jhu.edu/journals/theatre_journal/v053/)

Accessed: Tue Mar 27 13:36:43 2007

Related: [\[click here\]](#)

Tags: [\[click here\]](#)

zotero

the next-generation research tool



The
Andrew W.
Mellon
Foundation



www.zotero.org



Dan Cohen

dcohen@gmu.edu

www.dancohen.org